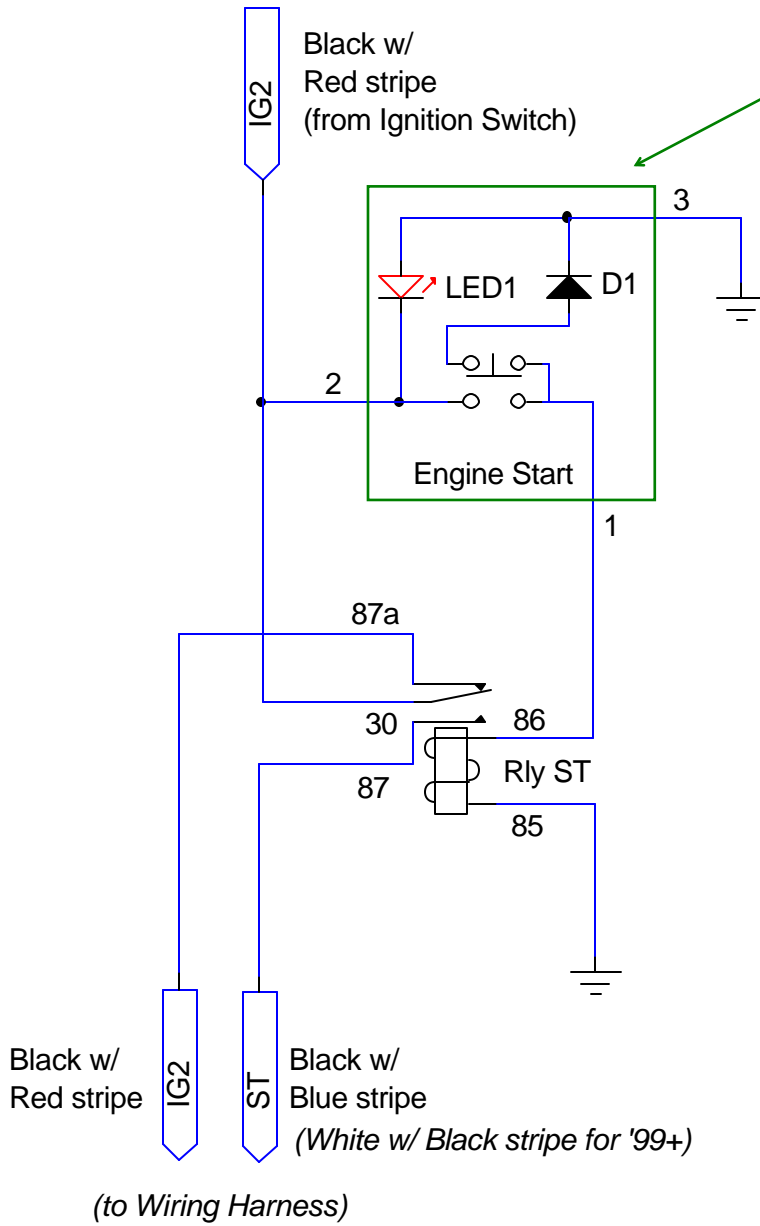


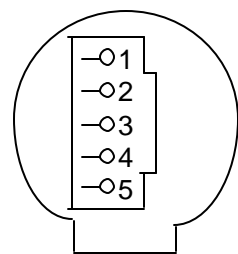
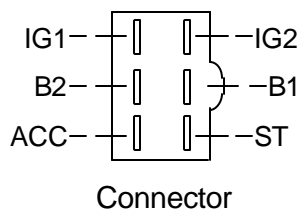
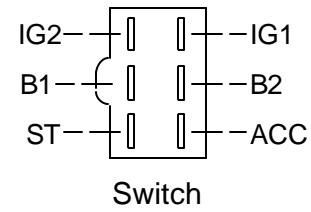
Mazda Miata '90-'97 BRB Engine Start circuit (duplicates ignition switch functions during START)

Operation:

1. Pressing the BRB switch, energises relay Rly ST, de-activating IG2 circuit and activating starter motor (circuit ST).



**S2000 BRB Assembly,
D1 and LED1 are internal**



(A 3.5" floppy power connector works great)

D1 - This diode is integral to the S2000 BRB, it's purpose it to shunt reverse EMF to ground when the relay is de-energised.

Rly ST - NTE R51-5D40-12F - SPDT
12VDC coil, 40A maximum load

(This is what makes the S2000 BRB superior to other switches in this application.)

©2002, 2003 by *PaladinMicro*

LED1 - S2000 BRB internal illumination